

The flexible, light-weight and modular architecture of Zephyr Portal ensures rapid deployment of secured, web-based workspaces, and provides a consolidated management console for enterprise content and applications... Zephyr E-Business Applications complements these portal services to give more value to your business.

Overview

elipva Zephyr Portal is a light-weight, J2EE-compliant portal solution that consolidates information and applications across heterogeneous platforms and networks into a single personalized view presented to multiple delivery channels. elipva Zephyr Portal is an ideal solution for organizations seeking a customizable browser-based unified user interface that is able to consolidate critical information and applications from different platforms and sources, and provision them in a secure manner to different users anytime and anywhere.

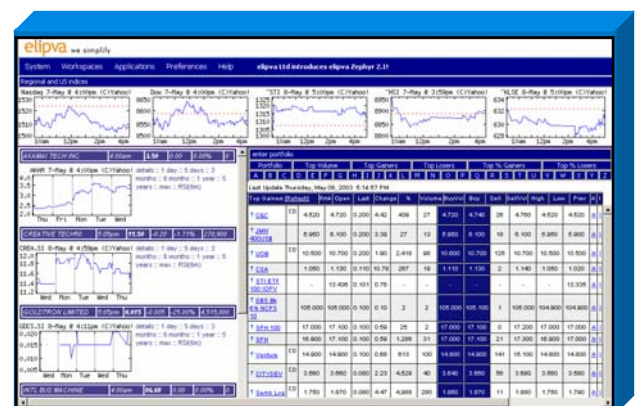
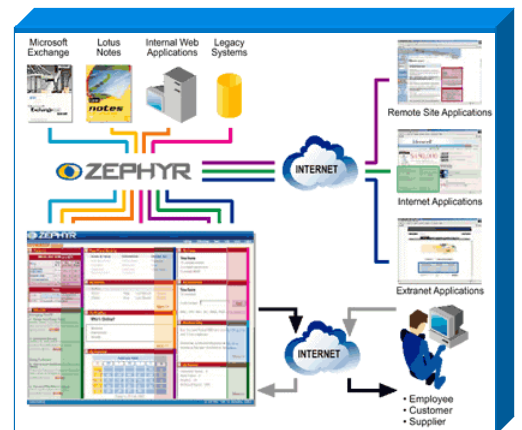
elipva Zephyr Portal enables visibility, collaboration, decision and control by providing capabilities to aggregate and integrate data across multiple platforms and delivering them through fully customizable web-based workspace which empowers users to access, extract, analyze, share and act on information they need at a single glance.

Unlike other portals solutions in the market, elipva Zephyr Portal is designed and developed with focus on convenience, ease and speed of use in aggregating, personalizing, presenting and delivering services and content to one or more communities. Its intuitiveness, flexibility, extensibility and scalability are designed specifically for business users, applications developers and operators or administrators.

elipva Zephyr Portal provides a common gateway to access other applications, static or dynamic content from internal and external sources. By allowing users to access all the resources they need from a single point, elipva Zephyr Portal reduces the time spent on searching for disparate information, and improves overall productivity and efficiency.

Its out-of-the-box features significantly reduce technology implementation costs and accelerate portal deployment with minimal customization and integration.

elipva Zephyr Portal is also a light-weight application development platform for the development and deployment of web-based Java and J2EE applications. The Zephyr platform also provides a role-based authentication and authorization implementations for identity management. A standard but configurable web user interface is provided and a default built-in module provides user personalization, content and application aggregation, page cropping as well as auto sign-on to form-based, HTTP-based authentication in a dynamic and visually exciting portal look and feel.



A Financial Portal with streaming financial charts and summaries of stock performances

Key Features	
Multiple portlets and workspaces options	<ul style="list-style-type: none"> • 3 types of configurable portlets: <ul style="list-style-type: none"> Personal – Create, manage and access by individual users Public – Create, manage by system administrators, and access by authorized users Personalizable – A special type of public portlet which is personalizable by individual users • 3 types of workspaces: <ul style="list-style-type: none"> Personal - Create, manage and access by individual users Community – Create by system administrators, manage and access by authorized user groups; allows user communities to share a common view of data and information Default - Create, manage by system administrators, and access by all user
Content and Application Aggregation	<ul style="list-style-type: none"> • Aggregates content and applications from internal/external & web/non-web sources (remote site applications, internet applications, extranet applications, legacy systems, email clients) into a dynamic portal presentation interface • Types of portlet content: <ul style="list-style-type: none"> Content – Static HTML, Dynamic & Real-time, Scrapping specific Web content Web Authentication - Target site authentication using HTML forms Basic Authentication - Target site requires HTTP basic authentication
Configurable Portal Services & Powerful Administration Capabilities	<ul style="list-style-type: none"> • Portlet services are administrator-controlled to allow flexible and multi-level access control • Create/modify/delete access-controlled services from internal (within the same network) and external (extranet or Internet) web content • Create/modify/delete configurable 'personalizable' services and these services can be configured individually by the end users • Control the access to these services via Zephyr's identity management mechanism (See Zephyr Identity Management below) • Create/modify/delete service categories that contain all services • Modify a single default workspace that is visible to all users. All services in the default workspace are visible to all users regardless of their original access control <p>*Available API allows for quick creation of plug-ins to existing remote web applications, to be displayed within Zephyr, allowing the same authentication and access control mechanism to manage the remote web applications. Zephyr Workspaces API can also optionally automatically sign-on to these remote web applications on the behalf of the user, using the user's pre-defined user name and password.</p>
High User Personalization and Intuitive User Interface	<ul style="list-style-type: none"> • Easy drag-and-drop method to create user-personalized workspaces layout and tailored views of information and customized services. • Configurable portal GUI elements such as menu items, header and footer banners, sections and skins • Create/modify/delete personal portlet services from internal and external web content • Create/modify/delete personalized workspaces to attach their portlet services
Auto Sign-on	<ul style="list-style-type: none"> • Auto sign-on across multiple applications, platforms, and Internet domains and authenticates on behalf of the users
Multi-lingual Support	<ul style="list-style-type: none"> • Support for multiple languages including English, Chinese, Thai etc.

Audit Log	<ul style="list-style-type: none"> • Maintain an audit log to track date, time and key user elements
<p>Complete Integration Part of Zephyr Complete Application Suites, and available anytime, anywhere via web browser</p>	
<p>Zephyr Identity Management</p>	
Hierarchy Role-Based Identity Management and Centralized Control	<ul style="list-style-type: none"> • Centralizes management of portals in a unified management environment while using comprehensive delegated administration approach for individual portals • User access is controlled by access authorities, defined with multiple levels according to user, applications, sources and portal contents • Consist of Authentication, Access Control and User Management
Authentication	<ul style="list-style-type: none"> • Authenticating a user who attempts to login with a set of given credentials • List of credentials includes, but is not limited to: username, password, host address, and login time • Each user is assigned a token after login. The token represents a valid user authenticated session with Zephyr • The token can be timed-out and the timeout interval is configurable through the GUI
Access Control	<ul style="list-style-type: none"> • Access control mechanism uses roles to determine the access and permission a user has to certain resources. For example, a role can be granted the permission to edit a user's properties or re-assign roles to another user or allow access to certain resource groups. • Create/remove/modify roles dynamically • Assign users to roles • Access to assignment of roles to users are limited by the access rights of the user • Delegated access control assignment (administrator can delegate the task of access control assignment to another user through the role-resources pairing)
User Management	<ul style="list-style-type: none"> • Represents the users of the system and are defined by a set of properties and the roles the users play. To access the system, the users are also assigned a set of resources according to their roles. • Default user properties include user id, password, email first name, last name, sex and date of birth. Additional properties can also be defined. • Create/remove/modify users according to a list of user properties • Access to creation/removal/modification of users are limited by the access rights of the user • Edit user properties • Admin reset password (hard reset by administrator) • Assignment of roles to user • Assignment of resources to users based on the roles played by the users • Default super administrator account that controls access to everything

Business Benefits

Improve Productivity, Visibility and Responsiveness

- Improve productivity and quality of work by minimizing time spent on information and data searches, enabling employees to focus on high value added activities
- Improve business visibility and encourage knowledge sharing with accessibility to desired real time information via any device, anytime, anywhere
- Increase responsiveness business services to customers, partners and opportunities through aggregating desired information necessary for decision making

Cost Savings through Empowering Users

- Empower end-users to manage their individual information and application requirements without extensive or expensive support IT staff, and without compromising security
- Cost savings realized through reduced training expenses and better allocation of manpower resources and little training required

Easy Deployment and Ease of Scalability

- Ability to roll out and deploy quickly and easily to the entire organization
- Out-of-the-box availability, simple installation, no separate software installation required for basic version
- Minimum training required and no disruption to end-user; end-user will have access to entire corporate world from launch date

Low Cost of Ownership

- No capital investment on specialized technical training, minimal technical knowledge required to create simple services
- Low hardware requirements and system maintenance

Maximize ROI and Use of Assets

- Maximize ROI through increased efficiency of existing systems, intranet and the internet
- Leverage the full potential of all business and IT applications by integrating all IT assets on a common platform and displayed through one user interface
- Track internal and external resources to eliminate redundant resource components and enhances important information services

Zephyr Complete Application Suites

- **Zephyr Employee Self-Service**
 - Zephyr E-Leave • Zephyr E-Claims • Zephyr E-Travel Request • Zephyr E-Purchase Order
- **Zephyr Intranet Suite**
 - Zephyr Content Publishing • Zephyr AnyFile • Zephyr Discussion Forum • *Zephyr Event Management
 - *Zephyr Suggestion Box • *Zephyr Survey/Poll • *Zephyr Help Desk • *Zephyr Phone Directory
 - (* To be available soon)
- **Zephyr Portal and Platform**
 - Zephyr Portal • Zephyr Platform

System Requirements

Hardware Requirements

Minimum Configuration for Application Server and ZESS

- Pentium III 500 Mhz, 1 CPU, 512 MB RAM, 100 MB HDD

Recommended Configuration for Application Server and ZESS

- Pentium III 1 Ghz, 1 CPU, 1GB RAM, 200 MB HDD

Software Requirements

- Microsoft Windows Platform
- Windows NT 4.0 sp6/Windows 2000 /XP
- Linux
- Solaris 8 and above
- Other Unix system (check with vendor)
- Internet Explorer 5.5 and above

Tested Environments

Application Servers/Servlet Containers

- Apache Tomcat 4.1/Windows 2000/XP
- Apache Tomcat 4.1/Solaris 8
- Apache Tomcat 4.1/Red Hat Linux 7.3
- Resin 2.1.6/Windows 2000/XP
- SunONE Application Server 7.0/Windows 2000/XP
- BEA Application Server 7.0/Windows 2000/XP

Databases

- MySQL 3.23.56, 4.0/Windows 2000/XP
- MySQL 3.23.56, 4.0/Solaris 8
- MySQL 3.23.56, 4.0/Red Hat Linux 7.3
- Microsoft SQL Server 2000/Windows 2000/XP
- Oracle 8.1.6/Solaris 8

Contact Us:

elipva Ltd
Blk 750C, Technopark@ Chai Chee
#04-03/04, Chai Chee Road
Singapore 469003
Tel: (65) 6723 3333
Fax: (65) 6720 6828
Website : www.elipva.com
e-mail: marketing@elipva.com

About elipva

elipva Ltd is a leading **enterprise solutions specialist** incorporated since 1999. We are a member of M Dream Inworld Ltd, a Hong Kong publicly-listed company, with other major shareholders including Singapore Technologies Telemedia and Allwin Inc, a Lippo Group Company.

With the philosophy 'To Simplify' business goals and processes, elipva delivers the benefit of cost effective **e-business solutions**, **enterprise application solutions** and **interactive multimedia and creative services** to our clients through a combination of best-of-breed IT solutions, technology expertise and industry best practices.

We are able to customize solutions based on a customer centric service model and we strongly believe that an **innovative and collaborative approach** is our best commitment to help achieve your business goals.